

Chatsworth Products

# Research, Development and Training Center

Georgetown, TX



Protecting your technology investment.

**United States**

Agoura Hills, CA  
800-834-4969

**Canada**

Toronto, Ontario, Canada  
+905-850-7770

**Europe**

Buckinghamshire, UK  
+441628524834

**Middle East & Africa**

Dubai, UAE  
+971-4-2602125

Doha, Qatar  
+974-4-267422

**Latin America**

+52-55-5203-7525  
Toll Free within Mexico  
800-201-7592  
chatsworth.com.co

**Asia Pacific**

+86 21 6880-0266  
chatsworth.com.cn



CHATSWORTH  
PRODUCTS

# Protecting your technology investment.

Designed with Chatsworth Products (CPI) customers in mind, the Research, Development and Training Center (RD&T) provides visitors with over 10,000 square feet of state-of-the-art testing facilities, a fully equipped product showroom, modern training rooms, and comfortably appointed customer meeting spaces.

Located at CPI's Georgetown, TX facility—just minutes from the technology hub of Austin—the RD&T Center is conveniently situated adjacent to one of CPI's key manufacturing and office sites; making customer visits a fully comprehensive event featuring in-person meet-and-greets, plant tours and more.

## CPI's Track Record in Power Ensures Your Technology Investment is Protected

**1991**

CPI is founded when 90 employees buy out the Dracon Division of Harris Corp. using an Employee Stock Ownership Plan (ESOP).



**2009**

CPI acquires Epicenter. With the integration of Epicenter's technology and power expertise, CPI further addresses customer needs with one of the most comprehensive data center power hardware and software solutions sets in the market.



## Product Test Lab

CPI's Product Test Lab provides the technology and equipment required for precise mechanical testing, electrical testing and prototyping of products.

- Mechanical testing calculates static and dynamic load ratings of CPI products
- Ability to simulate static loads up to 10,000 lbs.
- Contains a Fused Deposition Modeling (FDM) system that produces on-site plastic prototypes
- Prototypes are created quickly, providing working products for customers to review and test



## Training Center

The Training Center offers an equipped, state-of-the-art and fully connected location for effectively training CPI employees, partners and customers, either in person or remotely.

- Includes complete audio/visual capabilities to link equipment, other facilities, etc.
- Seats up to 125 visitors
- Room dividers to create multiple, smaller training room and breakout sessions

## 2019

CPI opens a new facility—the Electronics & Software Technology Center—in Round Rock, Texas, focused on technology development, customization and production of the eConnect line of intelligent power management solutions.



## 2012

CPI introduces eConnect® PDUs as a new generation of power management solutions for enterprise data centers, featuring the highest ambient temperature rating in the industry.

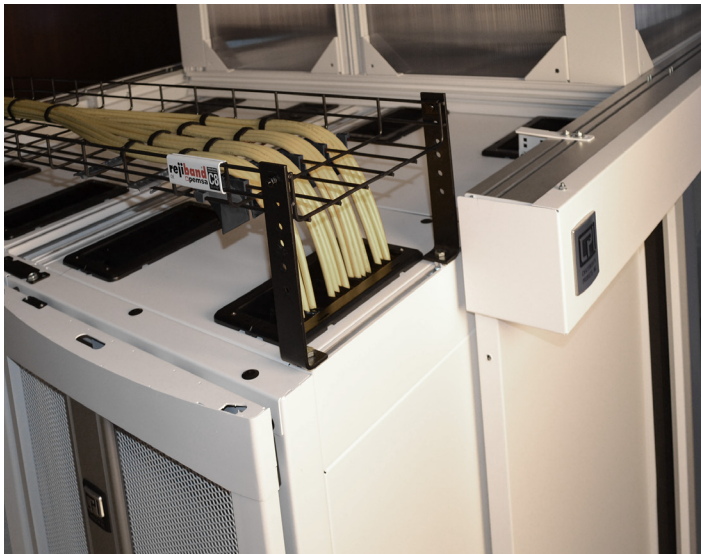


## 2020

CPI launches the full lineup of its next-generation eConnect PDUs.



CPI is committed to providing innovative power solutions—Made in America with globally sourced components—and will continue to expand its power product offerings.



## Product Showroom

Interact with multiple CPI products and solutions in a single environment that allows customers to experience a total solution with first-hand viewing and hands-on product demonstrations.

- Equipped with CPI cabinets, racks, cable management, cable tray, wall-mount enclosures, industrial enclosures, remote monitoring and power management products
- Comprehensive tours and walk-throughs provided by CPI Product Managers, Field Application Engineers and Regional Sales Managers
- Conveniently placed touchscreen displays to augment hands-on tutorials



## Customer Meeting Center

A comfortable, high-tech space, the Customer Meeting Center is available for small or large customer meetings or events.

- Includes complete audio/visual capabilities to link equipment, other facilities, etc.
- Seats up to 25 visitors
- Contains electronic customer privacy windows to product showroom and more
- Offers service and catering area room and breakout sessions

# Schedule a visit to CPI's RD&T Center

For more information on visiting CPI's RD&T Center or to schedule your first (or next) visit, please call 512-863-7800 or visit [chatsworth.com/rdt](https://chatsworth.com/rdt)

## RD&T:

Chatsworth Products  
3004 S. Austin Ave.  
Georgetown, TX 78626

## Headquarters:

Chatsworth Products  
29899 Agoura Road, Suite 120  
Agoura Hills, CA 91301



## Why Choose CPI?

Chatsworth Products is a global manufacturer of products and solutions that protect your ever-growing investment in information and communications technology for IT and industrial automation applications. We act as your business partner and are uniquely prepared to respond to your requirements with global availability and rapid product customization, giving you a competitive advantage. With decades of experience engineering thermal, power and cable management solutions for the data center, enterprise networking and industrial enclosure markets, CPI is well positioned to provide you with unequaled application expertise, customer service and technical support, and a global network of industry-leading distributors.

For more information about the RD&T Center, visit [chatsworth.com/rdt](https://chatsworth.com/rdt)



While every effort has been made to ensure the accuracy of all information, CPI does not accept liability for any errors or omissions and reserves the right to change information and descriptions of listed services and products.  
©2020 Chatsworth Products, Inc. All rights reserved. Chatsworth Products, Clik-Nut, CPI, CPI Passive Cooling, CUBE-IT, eConnect, Evolution, GlobalFrame, MegaFrame, Motive, QuadraRack, RMR, Saf-T-Grip, Secure Array, SeismicFrame, SlimFrame, TeraFrame and Velocity are federally registered trademarks of Chatsworth Products. EuroFrame and Simply Efficient are trademarks of Chatsworth Products. All other trademarks belong to their respective companies. v8/20 MKT-60020-354