



CHATSWORTH  
PRODUCTS

## RMR® Industrial Enclosures



[chatsworth.com](https://www.chatsworth.com)

# The Foundation for Your Digital Transformation

As connectivity evolves to support the Internet of Things (IoT) and Industrial IoT, companies face new challenges. Their IT networks are extending onto manufacturing floors, into warehouses and other nontraditional environments. These environments require enclosures that protect sensitive equipment from environmental elements and foreign objects. With nearly 30 years of enclosure design and manufacturing experience, Chatsworth Products (CPI) offers a full line of enclosures designed to protect equipment in these environments. This line, RMR® Industrial Enclosures, forms the foundation for your digital transformation.

## Unique Build-to-Order Capability

In this competitive environment, lean processes and attention to detail are capabilities you need to stay ahead. CPI is well positioned to act as your business partner, creating custom enclosures so you can provide your customers with what they need, when they need it.

## On-Time and Within Budget

At CPI, we understand what it takes to meet project requirements on time and within budget. We are uniquely prepared to respond to your specific requirements with competitive lead times and kitting that will give you a competitive advantage.

## Ready for System Integration

We will ship your industrial enclosure ready for equipment installation, so you can focus on system design and integration.



## Your Trusted Source for Industrial Enclosures

Unconditioned environments, such as manufacturing floors, agricultural farms, warehouses and shipping docks often contain automated and complex assembly lines with sensitive and expensive electrical and electronic equipment as well as networking equipment to connect machines, sensors and operator terminals. Use RMR® Industrial Enclosures to create secure spaces to protect your equipment.

### Third-Party Certification

RMR Industrial Enclosures provide UL® Type 4 (IP66), UL Type 12 (IP55) and NEMA Type 4X protection ratings, meaning they follow strict design requirements to certify that your sensitive automation IT, control and electrical equipment is protected against solid objects, such as dust and dirt, and noncorrosive liquids like water and dripping oil. Certification from a third-party laboratory validates performance in accordance to standards such as NEMA 250 and IEC 60529.

### Robotically Applied Foam Gasket

RMR Industrial Enclosures use highly advanced, continuous foam gasket technology at each panel and entry point to ensure anything stored within the enclosure is well protected from the environment.

### Advanced Thermal Management

Proper cooling inside the enclosure helps keep equipment clean and cool, prolonging the life of the equipment. RMR Industrial Enclosures offer a variety of advanced cooling accessories to address specific thermal control needs with Filter Fans and Cooling Units.

### Comprehensive Portfolio of Accessories

From NEMA-rated grommets to vents, drains and drip shields, as well as intelligent power distribution and monitoring, RMR Enclosures can be configured with a variety of accessories to meet your unique requirements.

### Simple Configuration and Ordering Process

Selecting the right enclosure is easy. Our free, online CPI Product Designer allows you to quickly and easily select the style, size and accessories you need under a single part number. That means no more searching through catalogs or selecting mismatched components.

### Quality Enclosure Design and Engineering

CPI's build-to-order engineering capability and lean manufacturing processes allow us to offer competitive pricing and lead times that match or exceed our competition, all while maintaining the highest quality standards that have kept our customers delighted for nearly 30 years.



**RMR**  
Industrial Enclosures



## Comprehensive Design for Edge Computing & Industrial Environments

RMR® Industrial Enclosures are engineered to protect equipment with cutting-edge sealing technology, certified ingress protection ratings and multiple equipment mounting options to support IT equipment, automation electronics and electrical controls and instrumentation in any location.

### RMR Modular Enclosure

A flexible solution with bolt-on panels that allows for multiple configurations to accommodate larger automation panels or racks for IT equipment

- Meets NEMA Type 12/IP 55 protection ratings
- Continuous foam gasket sealing technology
- High-strength, roll-formed steel frame with drop-in hardware
- Removable, bolt-on top, side, bottom and rear panels
- Single- or dual-access options with single door
- Solid metal or tempered glass viewing door options with two options for locking systems
- Optional gland plates for top and bottom panels
- Adjustable depth mounting locations for 19" EIA rails, mounting panels or accessories
- Kitting options for all accessories, including Filter Fans and Cooling Units
- Powder coat paint finish



**RMR**  
Industrial Enclosures

UL Type 12 and IP 55

### RMR Swing Wall-Mount Enclosure

Ideal for wall-mounting IT equipment; enables quick access to the front and rear of equipment through a three-part, swing-out design

- Meets NEMA Type 12/IP 55 protection ratings
- Continuous foam gasket sealing technology
- Solid metal or tempered glass door options
- Optional gland plates for top and bottom of wall-mounted section
- Adjustable depth mounting locations for 19" EIA rails, mounting panels or accessories
- Kitting options for all accessories, including Filter Fans and Cooling Units
- Powder coat paint finish



**RMR**  
Industrial Enclosures

UL Type 12 and IP 55

### RMR Fixed Wall-Mount Enclosure

A single access enclosure that supports a mix of IT, electrical and electronic equipment

- Meets NEMA Type 12/IP 55 protection ratings
- Continuous foam gasket sealing technology
- Solid metal or tempered glass door options
- Optional gland plates for top and bottom
- Adjustable depth mounting locations for 19" EIA rails, mounting panels or accessories
- Kitting options for all accessories, including Filter Fans and Cooling Units
- Powder coat paint finish



**RMR**  
Industrial Enclosures

UL Type 12 and IP 55

## RMR Free-Standing Enclosure

A cost-effective enclosure for large IT, telecom or automation panel applications that supports front and rear access to deeper electrical equipment

- Meets NEMA Type 1, 3, 4, 4X, 5, 12 (IP 55/66)
- Can meet NEMA Type 2, 3R and 3RX with kitted accessories
- Monolithic design
- Continuous foam gasket sealing technology
- Single or dual access with single or double door options
- Three locking system styles
- Integrated bonding studs
- Adjustable depth mounting locations for mounting panels
- Kitting options for all accessories, including Filter Fans and Cooling Units
- Powder coat paint or stainless steel in brushed finish options



Continuous Foam Gasket

**RMR**  
Industrial Enclosures

NEMA Type 12/IP 55  
NEMA Type 4/IP 66

## RMR Floor-Mount Enclosure

A cost-effective enclosure for large automation panel applications that includes floor stands for easier bottom cable entry

- Meets NEMA Type 1, 3, 4, 4X, 5, 12 (IP 55/66)
- Can meet NEMA Type 2, 3R and 3RX with kitted accessories
- Disconnect models are also available
- Monolithic design
- Continuous foam gasket sealing technology
- Single access with double door design
- Three locking system styles
- Integrated bonding studs
- Adjustable depth mounting locations for mounting panels
- Kitting options for all accessories, including Filter Fans and Cooling Units
- Powder coat paint or stainless steel in brushed finish options



Continuous Foam Gasket

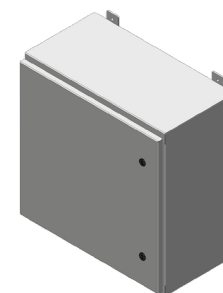
**RMR**  
Industrial Enclosures

NEMA Type 12/IP 55  
NEMA Type 4/IP 66

## RMR Standard Wall-Mount Enclosure

A cost-effective individual enclosure for small IT, telecom or automation panel applications

- Meets NEMA Type 1, 3, 4, 4X, 5, 12 (IP 55/66)
- Can meet NEMA Type 2, 3R and 3RX with kitted accessories
- Disconnect models are also available
- Monolithic design
- Continuous foam gasket sealing technology
- Single access with single or double door options
- Solid metal or tempered glass door options
- Two wall-mounting methods
- Adjustable depth mounting locations for mounting panels
- Kitting options for all accessories, including Filter Fans and Cooling Units
- Powder coat paint or stainless steel brushed finish options



Continuous Foam Gasket

**RMR**  
Industrial Enclosures

NEMA Type 12/IP 55  
NEMA Type 4/IP 66

## Specialty Accessories for Optimal Performance

CPI's expertise in IT infrastructure encompasses many products and solutions that seamlessly integrate with RMR® Industrial Enclosures. These include:

### Thermal Management Accessories

A comprehensive line of Filter Fans and Cooling Units are available to provide superior thermal management to help protect the life of the electronic equipment in environments that require NEMA Type 12 (IP55) and NEMA Type 4 (IP66) protection ratings.

### Sealing System Accessories

RMR Industrial Enclosures require specialized seals for cable openings in order to maintain NEMA Type 12 (IP55) and NEMA Type 4 (IP66) protection ratings. CPI offers three unique solutions that ensure operational reliability: Roxtec ComSeal™ Grommet, Roxtec RG6 Gland Seal and the EPDM Snap-In LiquidTight Grommet.

### Drain Plug, Drip Shield, Protective Vent and More

CPI provides a variety of value-added accessories to complement its functionality and ease of use. Many accessories can be added to make the enclosure rated for NEMA Type 2, 3, 3R and 3RX.

### Grounding and Bonding

CPI offers rack- and wall-mount busbars and various straps for bonding metal components together within enclosures and along cable runway and tray pathways.

### Power Management

Deliver power to equipment within the enclosure, and remotely monitor or control power to equipment through an Internet connection. CPI's power management and software products allow you to turn outlets on and off remotely, set thresholds and be notified by email when measurements are near critical levels.

### Environmental Monitoring and Security

Monitor temperature, humidity, presence of water, open/closed door conditions and view IP cameras through an Internet connection. Set operational thresholds, and receive email notifications when measurements are near critical levels.

### Clik-Nut® Hardware Kit

Reduce labor and hardware installation time with CPI's patented Clik-Nut® cage nuts. Clik-Nut does not require installation tools and has the same payload capacity and reliability as standard cage nuts. Ideal for use with 19" EIA mounting rail kits on RMR Industrial Enclosures.



RMR Modular Filter Kit



RMR Enclosure XL Polyvent Protective Vent Kit



RMR Sealing

## Quick, On-Demand Configuration

More than 1 million configuration and personalization options are available through the CPI Product Designer to help you meet your unique NEMA/IP protection needs. The CPI Product Designer gives you the ability to quickly select and accessorize RMR Industrial Enclosures under one part number for easy ordering and tracking.

The CPI Product Designer also guides you through the steps and selections necessary to create an enclosure that meets your unique size requirements and thermal and cable management needs.

You will get bills of material (BOM), drawings and sales documents automatically.

Go to [chatsworth.com/product-designer](https://chatsworth.com/product-designer) to select your RMR Industrial Enclosure.

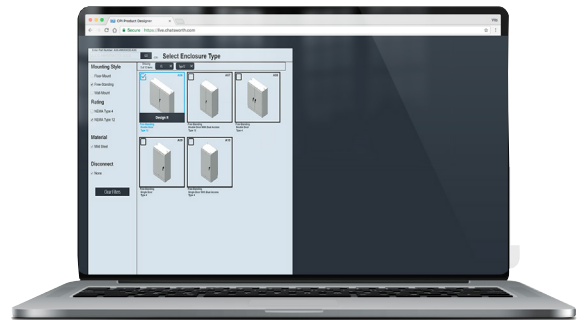
### Modified Standard Enclosures

If you have other customization requests, such as extra openings, different colors or inclusion of an unlisted accessory, please contact CPI Application Engineering.

### Success Story

One of the world's leading pharmaceutical distributors extended their network to cover the warehouse spaces using the RMR Modular Enclosure solution.

Read about this success story at [chatsworth.com/industrial-enclosures](https://chatsworth.com/industrial-enclosures)



### **CPI Product Designer**

creates unique enclosures quickly and easily by allowing you to select the size, features and accessories needed for a specific application. CPI Product Designer will generate bills of material, drawings, 3D models and sales documents automatically.

**RMR Industrial Enclosures are completely sealed using robotically applied formed-in-place technology, providing electronic equipment with added protection from the intrusion of solid foreign objects.**



**CHATSWORTH  
PRODUCTS**

#### **United States & Canada**

Simi Valley, CA  
800-834-4969  
Toronto, Ontario, Canada  
+905-850-7770  
[chatsworth.com](https://www.chatsworth.com)

#### **Latin America**

Mexico City, Mexico  
+52-55-5203-7525  
Toll Free within Mexico  
01-800-201-7592  
[chatsworth.com.co](https://www.chatsworth.com.co)

#### **Europe**

Buckinghamshire, England, UK  
+44-1628-524-834  
[chatsworth.com](https://www.chatsworth.com)

#### **Middle East & Africa**

Dubai, UAE  
+971-4-2602125  
Doha, Qatar  
+974-4-4267422  
[chatsworth.com](https://www.chatsworth.com)

#### **Asia Pacific**

Jing'an District, Shanghai, China  
+86 21 6880-0266  
[chatsworth.com.cn](https://www.chatsworth.com.cn)

Find more information  
about CPI solutions at:  
[chatsworth.com](https://www.chatsworth.com)

+1-800-834-4969 (U.S. & Canada)  
or [techsupport@chatsworth.com](mailto:techsupport@chatsworth.com)

#### **Manufacturing Capability and Global Availability**

Headquartered in the United States, CPI operates from multiple sites worldwide, including offices in Mexico, Canada, China, the Middle East and the United Kingdom. CPI's manufacturing facilities are located in the United States, Asia and Europe.

Standard products are readily available through a global network of industry-leading distributors. With stock availability, and CPI's consistently short factory lead times, you can be assured that CPI solutions will be accessible to meet your project scheduling needs.

#### **How to Buy**

CPI sales are conducted in partnership with a global network of distributors, contractors and resellers to ensure a high level of stock availability. Use CPI's Online Catalog to place an order with a distributor near you. Go to [chatsworth.com](https://www.chatsworth.com) to learn more.

#### **About CPI**

CPI, a 100% employee-owned company, was founded in June 1991, when 90 workers joined together and purchased the Dracon Division of Harris Corporation using an Employee Stock Ownership Plan (ESOP). Employee ownership is central to the success of CPI. Employee owners are committed to a philosophy of quality through teamwork, caring and commitment, which are extended to customers through our solutions and services.



While every effort has been made to ensure the accuracy of all information, CPI does not accept liability for any errors or omissions and reserves the right to change information and descriptions of listed services and products.

©2024 Chatsworth Products, Inc. All rights reserved. Chatsworth Products, CliK-Nut, CPI, CPI Passive Cooling, CUBE-IT, Secure Array, eConnect, Evolution, GlobalFrame, MegaFrame, QuadraRack, RMR, Saf-T-Grip, SeismicFrame, SlimFrame, TeraFrame, Motive, EuroFrame, Velocity and ZetaFrame are federally registered trademarks of Chatsworth Products. H-Plane, Hi-Bar, In-Plane, M-Frame, NetPoint, Oberon, Simply Efficient, Skybar, and Wi-Tile are trademarks of Chatsworth Products. All other trademarks belong to their respective companies. Rev.5 1/24 MKT-60020-658

[chatsworth.com](https://www.chatsworth.com)