



**CHATSWORTH  
PRODUCTS**



## IT Infrastructure Solutions to Support Anywhere, All-the-Time Learning

As emerging technologies continue to advance and enhance teaching and learning experiences across the K-12 and higher education spectrums, it's important to consider the physical infrastructure needed to enable digital and remote learning. As a result of the increasing amount of equipment required to properly power and protect the hardware, networks and infrastructure that supply connectivity to the classroom and campus, here are six network components that IT teams at schools and universities need now:



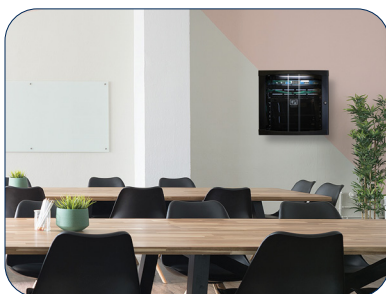
**Rack power distribution units (PDUs) and uninterruptible power supplies (UPS) that can be monitored and controlled remotely**



**Server cabinets and racks to support and protect heavy equipment**



**Cable management and pathway to organize high-density cabling**



**Wall-mount cabinets to extend the network to classrooms and portables**



**NEMA-rated industrial enclosures to protect equipment outdoors**



**Enclosures and mounts to secure wireless access points**

## Power Distribution Solutions

- eConnect™ PDUs – Six progressive functionality levels allowing local metering, remote monitoring and switching, integrated environmental monitoring at the device level with industry-leading temperature rating of 149° F supporting power densities up to 34.5 kW/cabinet.
  - Redundancy Pack option that includes two PDUs (1) Black + (1) Glacier White
  - Meets latest UL® and IEC 62368 requirements
- Power strips – 120V, 15A and 20A economical power distribution solutions available with integrated supplemental surge protection and local metering



## ZetaFrame™ Cabinet

- Fast, built-to-order configurability
- Preinstalled with power, cable and thermal management under one project-specific part number
- Supports 5000 lbs (2268 kg) static and 4000 lbs (1814 kg) dynamic loads
- Integrated bonding through door hinges and contact points
- Enhanced cable management accessories can be used independently or in combinations to accommodate a wide variety of applications
- Optional upgrade to brush-sealed cable openings



## RFID Electronic Lock Kit

- Integrated RFID Card Reader
- Can be integrated through eConnect PDUs, networked controller or building access control system
- Remote access control authentication
- ZetaFrame™ Cabinet preinstallation



## CUBE-iT® Wall-Mount Cabinet

- Three-part, swing-out design allows access and service to the front and rear of equipment
- A single lock and key on the front door provides access to the entire cabinet
- Rear panel includes knockouts for conduits and features cable tie and attachment points
- Hinge design allows removal of the rear panel for easier installation on the wall
- 300 lb (136 kg) load rating
- Includes one pair of adjustable depth 19" EIA threaded equipment mounting rails and cable pass-through knockout with optional brush seal
- Available with optional low-decibel (31 dB), dual-fan kit
- Factory-prepped bonding feature
- Ships fully assembled

## Uninterruptible Power Supplies (UPS)

- Double conversion online models up to 10kVA include Lithium-Ion based solutions with 6 years of warranty, providing highest levels of protection for industrial environments



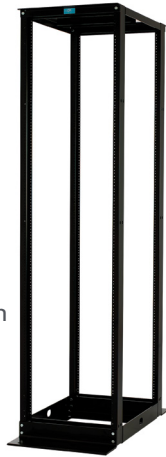
## Power IQ® for eConnect® (DCIM Software)

- Centralized authentication, access and auditing of all equipment
- Centralized outlet, PDU and equipment grouping
- Data collection and trends reporting
- Inbound trap filtering and outbound trap forwarding
- Automated email alerts



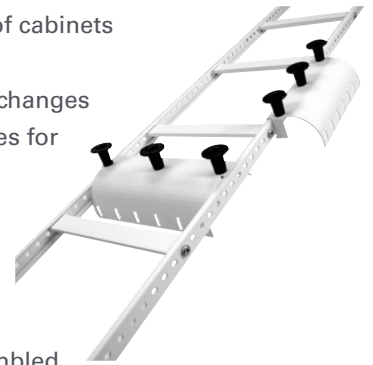
## QuadraRack® 4-Post Frame

- Offers easy access to equipment and cabling
- Quick assembly with one-piece top and bottom panel sets
- Easy to bay together to create multi-frame configurations
- Equipment mounting locations are marked and numbered on the mounting channel
- Threaded mounting holes speed installation of rack-mount equipment and shelving
- Supports large equipment on heavy-duty four-post fixed and sliding shelves



## Adjustable Cable Runway

- Provides cable pathway customization with movable cross members
- Supports cable and fiber from floors, ceilings, walls and the tops of cabinets and racks
- Simplifies moves, adds and changes
- Supports tool-less accessories for quick and easy deployment
- Complements other CPI Runway Systems
- Adapts to any data center or computer room
- Ships assembled or unassembled
- Bonded construction



## Motive® Cable Manager

- Central track system provides unlimited adjustability with direct support for cable bundles
- Includes 4 Accessory Rods, 4 Rotating Management Fingers, 12 Cable Bundle Swivels and 4 Half Spools
- Large radii are designed into many of the frame elements
- Dual-hinged door opens to the right or left and offers push-to-close convenience
- Hook feature on inside of front door provides a dedicated, secure location to hang a test meter
- Available in a wide variety of heights, widths and configurations



## RMR® Free-Standing Enclosures

- NEMA Type 4, 12, 3, 3R, 5, 2 and 1
- For indoor and outdoor use
- Available in stainless steel with brushed finish for corrosive environments
- Easy-to-use side channels for mounting
- Continuous foam gasket seal
- Wide range of sizes available
- Single- and double-door options
- 3-point latch with choice of lock
- Optional adjustable-depth mounting plate



## Oberon Skybar 1024 Plastic Enclosure

- NEMA Type 4X, 4, 12, 13, 2, 1 for indoor or outdoor use
- Protect AP, antennas, cabling, and Power over Ethernet (PoE) injector from weather, spraying liquids, dust, and impacts
- Virtually transparent to wireless signal
- Low-profile enclosure can be wall or mast mounted, includes plastic mounting panel
- Hinged, gasketed door with hasp for padlock



## Oberon NetPoint 3032 Wireless Bollard

- NEMA Type 3R for indoor and outdoor use
- Protect AP, antennas, cabling, and switch from weather, spilling liquids, and tampering
- Virtually transparent to wireless signal
- Large enough for most vendor's APs, dipole or panel antennas, small network switch, media converter and PoE injector
- Available in different heights and finishes





## Protect the Network Outdoors, Throughout the Campus

### RMR Wall-Mount Enclosures

- NEMA Type 4, 12, 3, 3R, 5, 2 and 1
- For indoor and outdoor use
- Continuous foam gasket seal
- Wide range of sizes available
- Single- and double-door options
- 3-point or 1/4-turn latch with choice of lock
- Optional rear mounting plate
- Available with solid metal or tempered glass door
- Disconnect Enclosures with standard cutout on the right flange are also available



### Accessories for RMR Industrial Enclosures

- NEMA-rated Cooling Units and Filter Fans keep equipment cool inside the enclosure
- Roxtec grommets are rated IP 55 and seal cable openings and support multiple cables of different diameters
- LED Light Kit provides additional lighting inside the enclosure; 100-240 Volts
- Drip Shield Assembly provides additional protection against ice and rain; Use to meet NEMA Type 3R requirements



### About CPI

CPI, a 100% employee-owned company, was founded in June 1991, when 90 workers joined together and purchased the Dracon Division of Harris Corporation using an Employee Stock Ownership Plan (ESOP). Employee ownership is central to the success of CPI. Employee owners are committed to a philosophy of quality through teamwork, caring and commitment, which are extended to customers through our solutions and services.

[chatsworth.com](http://chatsworth.com)

[techsupport@chatsworth.com](mailto:techsupport@chatsworth.com)

800-834-4969



While every effort has been made to ensure the accuracy of all information, CPI does not accept liability for any errors or omissions and reserves the right to change information and descriptions of listed services and products.

©2023 Chatsworth Products, Inc. All rights reserved. Chatsworth Products, Click-Nut, CPI, CPI Passive Cooling, CUBE-iT, Secure Array, eConnect, Evolution, GlobalFrame, MegaFrame, QuadraRack, RMR, Saf-T-Grip, SeismicFrame, SlimFrame, TeraFrame, Motive and Velocity are federally registered trademarks of Chatsworth Products. EuroFrame, H-Plane, Hi-Bar, In-Plane, M-Frame, NetPoint, Simply Efficient, Skybar, Wi-Tile and ZetaFrame are trademarks of Chatsworth Products and Oberon, a division of Chatsworth Products. All other trademarks belong to their respective companies. v03/23 MKT-CPI-780