



**CHATSWORTH  
PRODUCTS**

# UPS – Web/SNMP Cards

Provide remote monitoring, management and control of UPS through a network connection from a web browser.

- **Remote monitoring** – Input voltage, output voltage, frequency, temperature, load and capacity
- **Detailed log listing** – through event, data and battery test logs
- **Event notification** – receive notifications via email, SMS or Traps
- **UPS control** – schedule UPS self tests, examine event/data logs, perform multi-server shutdown, examine battery performance, reboot UPS and equipment
- **Environmental monitoring** – optional sensor monitors external temperature and humidity
- **Standard network connection** – 10/100 MB Ethernet
- **Strong authentication** – centralized authentication by Radius
- **Advanced encryption** – supports HTTPs, SSL, SSH and SNMPv3 protocols
- **Communication Cards** – provide remote monitoring, management and control of the UPS through a network connection from a web browser. Monitor input voltage, output voltage, frequency, temperature, load and capacity. View event, data and battery test logs.

**Additional Features:**

- MIB supported: PPC MIB, RFC1628, SNMPv1/v2/v3
- LAN Protocols supported: TCP/IP, IPv4, IPv6, HTTP, HTTPS, SSL, SSH, SMTP, SNTP, DHCP, Telnet, BOOTP, DNS, DDNS, PPPoE, RADIUS
- Real-Time Clock



SNMP1



SNMP1EXT



SNMP2



SNMP2EXT



RELAY1

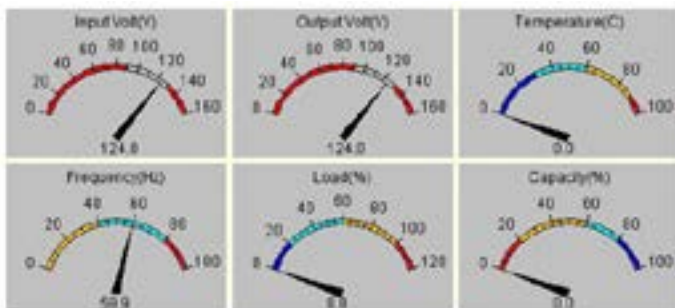


MODBUS1

**ORDERING INFORMATION**

Part Number	Description	Shipping Weight lb (kg)
SNMP1	Internal SNMP/WEB Card For VD/VL/LD UPS Models; 10/100 MB; Management and Shutdown of Remote Clients Via LAN; Black.	2 (0.9)
SNMP1EXT	Environmental Monitoring Sensor; Attaches to SNMP1 Card; Monitors Temperature, Humidity; Black	2 (0.9)
SNMP2	Two port internal SNMP/Web Card; Included with VD5K3P-1 and VD8K3P-1	2 (0.9)
SNMP2EXT	Temperature and Humidity Probe, requires SNMP2	2 (0.9)
MODBUS1	MODBUS (RTU) Protocol Card	2 (0.9)
RELAY1	Relay Card with 10 port relay connector	2 (0.9)

**SNMP Web management interface meter/chart**



**United States & Canada**  
 Simi Valley, CA  
 800-834-4969  
 Toronto, Ontario, Canada  
 +905-850-7770  
 chatsworth.com  
 techsupport@chatsworth.com

**Latin America**  
 Mexico City, Mexico  
 +52-55-5203-7525  
 Toll Free within Mexico  
 800-201-7592  
 chatsworth.com.co

**Europe**  
 Buckinghamshire  
 England, UK  
 +44-1628-524-834

**Middle East & Africa**  
 Dubai, UAE  
 +971-4-2602125  
 Doha, Qatar  
 +974-4-267422

**Asia Pacific**  
 Jing'an District,  
 Shanghai, China  
 +86 21 6880-0266  
 chatsworth.com.cn