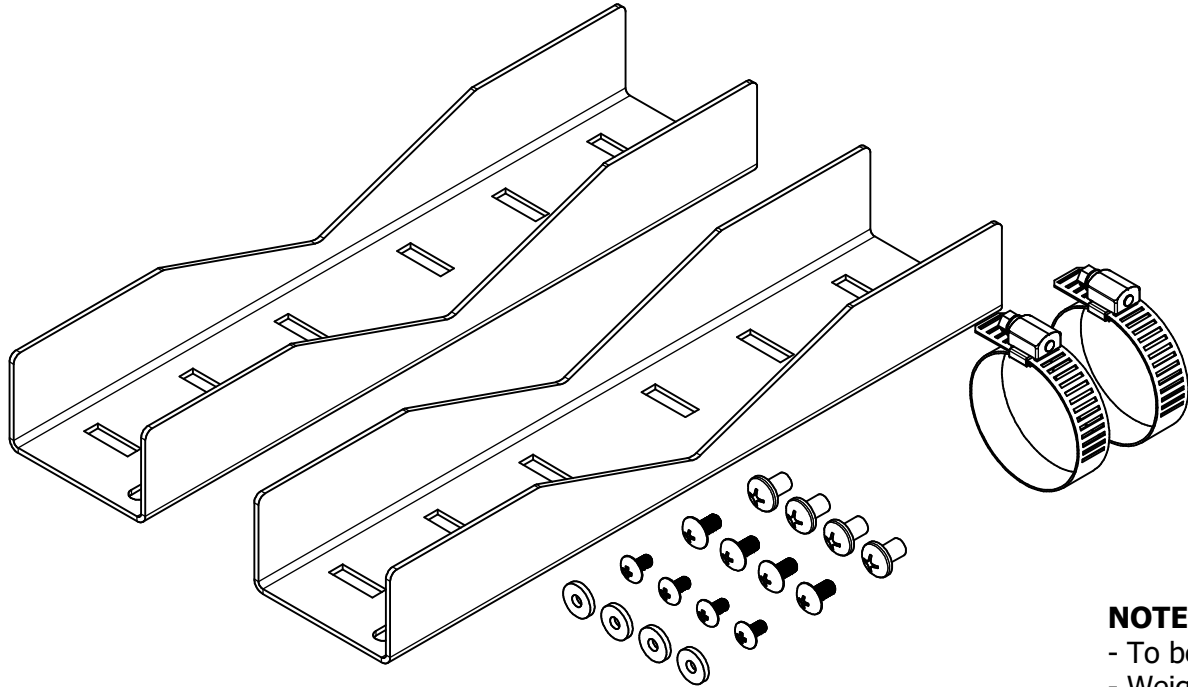


REVISION HISTORY				
ZONE	REV	DESCRIPTION	DATE	APPROVED
All	1	Released	7/21/2020	CAH
All	2	Updated Views, Notes, and Includes List	2/11/2022	CAH



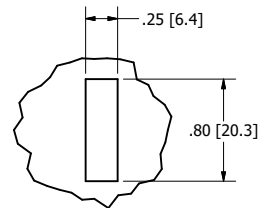
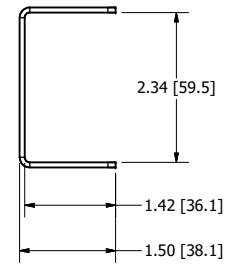
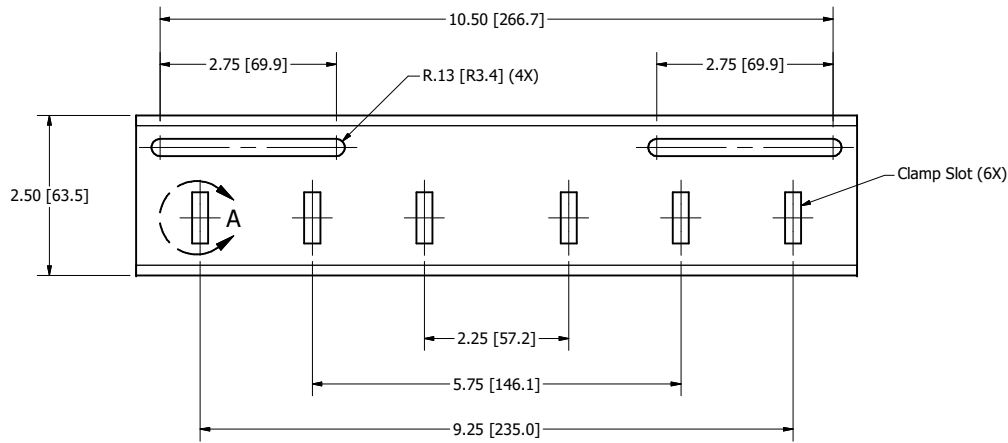
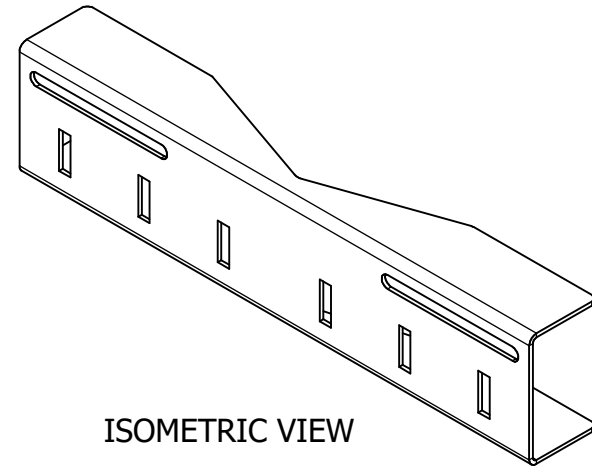
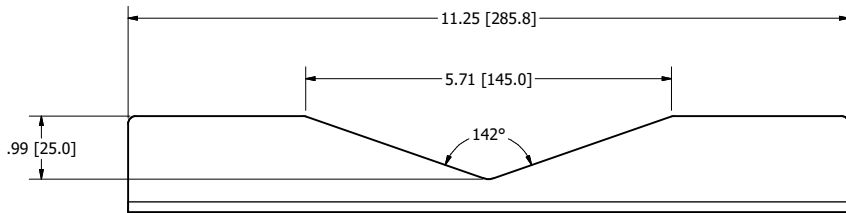
**NOTE:**

- To be used with models 1021, 1024, or 1026-12106-XX
- Weight: 3 lbs.
- Material: 14 Ga. Galvanized Steel Pole Mount Brackets

**Includes:**

- (2) Pole Mount Brackets
- (2) 4-1/8" to 7" SS Worm-Drive Clamps
- (4) 1/4"-20 x 3/8" SS Pan Head Screws
- (4) M4 x 8 mm SS Extra-Wide Truss Head Screws
- (4) M5 x 10 mm SS Extra-Wide Truss Head Screws
- (4) #8 SS Oversized Washers

DRAWN CAH	2/11/2022	Oberon, Inc. - 1315 S. Allen St. - State College, PA 16801		
CHECKED CAH	2/11/2022	TITLE		
QA		Model 39-POLE-MOUNT-BRACKET		
MFG CAH	2/11/2022	SIZE C	DWG NO 39-POLE-MOUNT-BRACKET	REV 2
APPROVED CAH	2/11/2022	SCALE	SHEET 1 OF 2	
TOLERANCE:	.0 = +/- .030 .00 = +/- .015 .000 = +/- .005			



DETAIL A (6X)  
SCALE 1.33 : 1

DRAWN CAH	2/11/2022	Oberon, Inc. - 1315 S. Allen St. - State College, PA 16801		
CHECKED CAH	2/11/2022	TITLE		
QA		Model 39-POLE-MOUNT-BRACKET		
MFG CAH	2/11/2022	SIZE C	DWG NO 39-POLE-MOUNT-BRACKET	REV 2
APPROVED CAH	2/11/2022	SCALE	SHEET 2 OF 2	
TOLERANCE:	.0 = +/- .030 .00 = +/- .015 .000 = +/- .005			