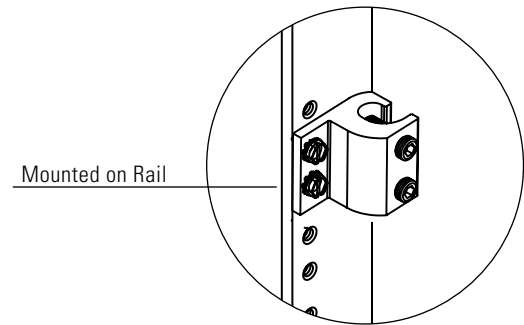
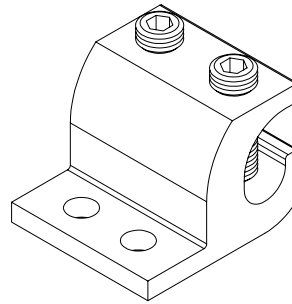


Two Mounting Hole Ground Terminal Block

CPI's Two Mounting Hole Ground Terminal Block provides a convenient way to attach ground wires to racks or cabinets and meets BICSI and ANSI/EIA/TIA two-hole mounting recommendations. Constructed of extruded, high-strength aluminum and accepts conductors ranging from #14 AWG through 2/0. Includes two #3/8-24 x 7/8" L stainless steel hex head set screws.

- Manufactured from electroplated tin aluminum
- UL® Listed
- Available individually or in packages of 10



ORDERING INFORMATION

Part Number	Description	Shipping Weight lb (kg)
40167-001	Two Mounting Hole Ground Terminal Block, Each for Wire Size #14-2/0	1 (0.5)
40167-010	Two Mounting Hole Ground Terminal Block, Pack of 10 for Wire Size #14-2/0	10 (5.4)

United States

Agoura Hills, CA
800-834-4969

Canada

Toronto, Ontario, Canada
+905-850-7770

Europe

Buckinghamshire, UK
+441628524834

Middle East & Africa

Dubai, UAE
+971-4-2602125

Doha, Qatar
+974-4-267422

Latin America

+52-55-5203-7525
Toll Free within Mexico
800-201-7592
chatsworth.com.co

Asia Pacific

+86 21 6880-0266
chatsworth.com.cn



CHATSWORTH
PRODUCTS