



CHATSWORTH
PRODUCTS

CPI Solutions



chatsworth.com

At Chatsworth Products (CPI), it is our mission to address today's critical Information and Communications Technology (ICT) infrastructure and industrial enclosure needs with products and services that power and protect your ever-growing technology investment. As a trusted business partner, we are uniquely prepared to respond to your specific requirements with global availability and rapid product customization that will give you a competitive advantage.

Service and Support

We offer highly trained specialists to help solve your ICT infrastructure needs, including on-site consultation services and Computational Fluid Dynamics (CFD) analysis.

Quality Products

Our products deliver reliable, structural support that exceeds customer expectations through innovation, functionality and performance. CPI's facilities meet the strict requirements to be an ISO 9001 certified company.

Breadth of Products and Solutions

CPI delivers innovation, configurability, quality and value with a breadth of integrated system components covering virtually all physical layer needs of today's ICT infrastructure with future-ready capability.

Global Availability

Headquartered in the United States, CPI operates from multiple sites worldwide, including offices in Mexico, Canada, China, the Middle East and the United Kingdom.

Customization and Customer Focus

CPI's engineering and manufacturing model enables flexibility to create and customize products to solve unique problems.

CPI Data Center Solutions

Achieve high availability, efficiency and scalability

Data centers are becoming more complex, increasing the need for cohesive white space management. The CPI power and cabinet ecosystem solution integrates hardware and software into a single platform, giving data center managers the visibility and understanding needed to make informed decisions quickly.



Rack Power Distribution and Management



Environmental Monitoring



Access Control and Regulatory Compliance



DCIM Software



Airflow Management



Cable Management

CPI Advantages

- Custom configurations with one-on-one consultation services to fit your unique needs
- Preinstallation and kitting services reduce onsite labor, simplifying and speeding deployment
- Market-leading 5,000 lb (2268 kg) static and 4,000 lb (1814 kg) dynamic loads
- Improve capacity with device-level power monitoring and control
- Meet regulatory compliance with access control monitoring
- Obtain power reporting and trending data to optimize capacity utilization
- CPI Passive Cooling® technology supports cabinet power/heat loads up to 30 kW per cabinet
- Reduce cooling cost and increase efficiency
- Suitable for greenfield and brownfield applications

End-To-End Solutions

At the room level, CPI provides a complete portfolio of data center solutions that work within an integrated power and cabinet ecosystem, providing you with the space optimization and thermal control you need to achieve your data center efficiency and availability goals.



Aisle Containment

Isolating hot and cold air in the room



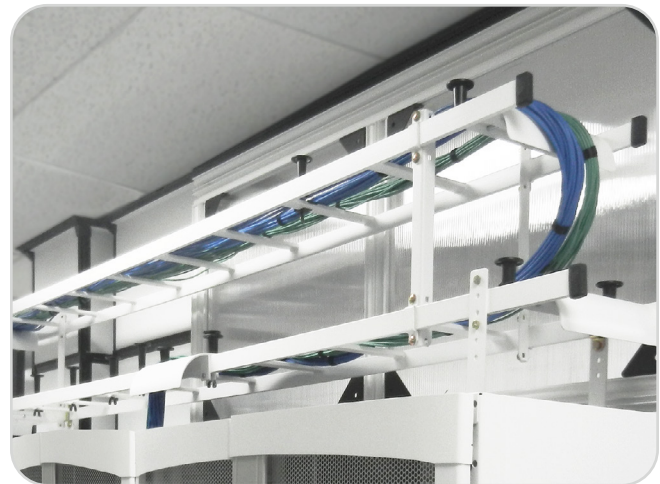
Monitoring Software

Ensuring site optimization and capacity planning



Racks/Cable Management

Managing interconnection



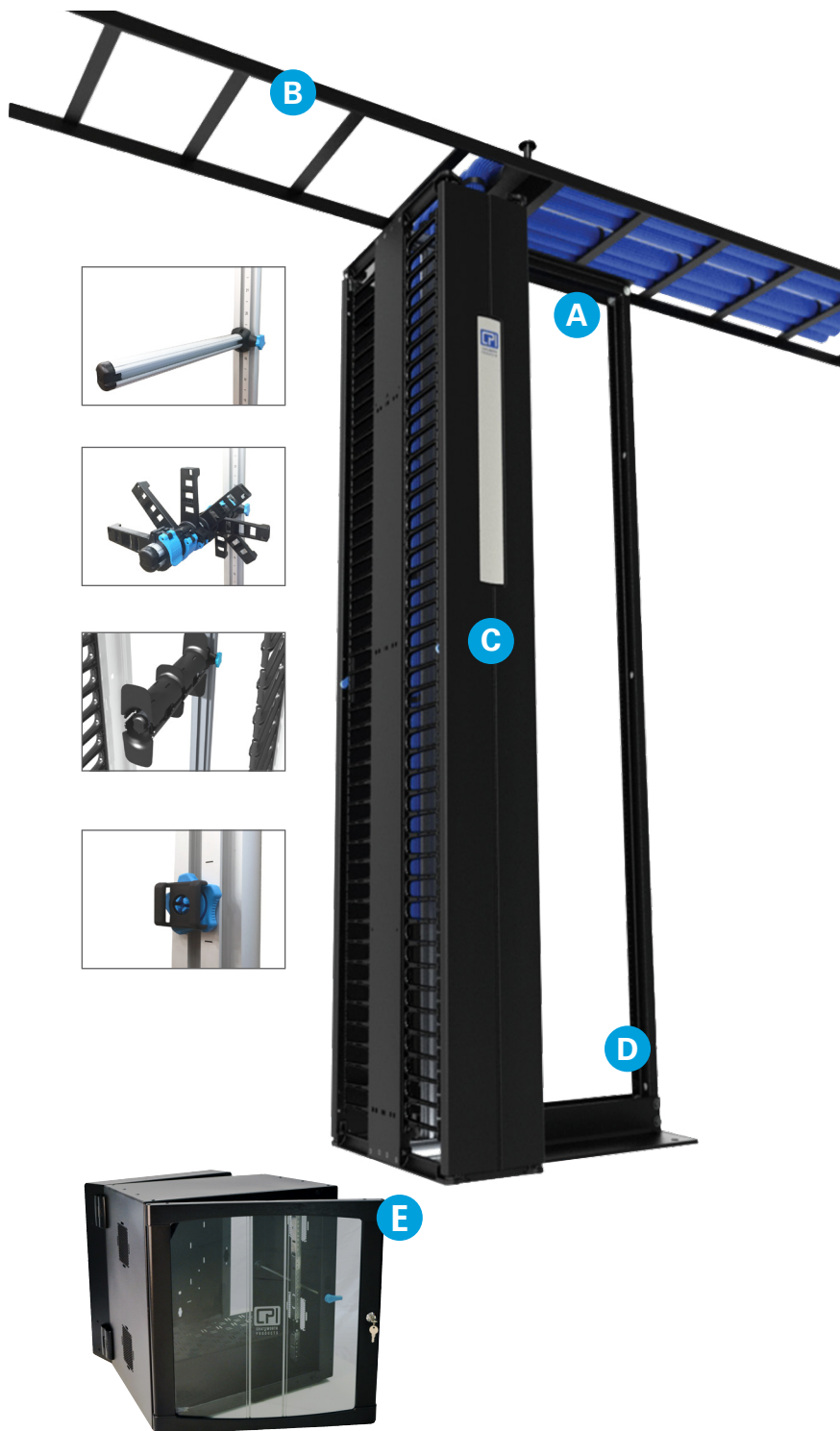
Cable Pathway

Connecting equipment above racks

CPI Enterprise Networking Solutions

Ensure reliability, flexibility and speedy deployment

CPI offers all the components and consultation services you need to ensure your premise network will support emerging technologies, increasing densities and future growth.



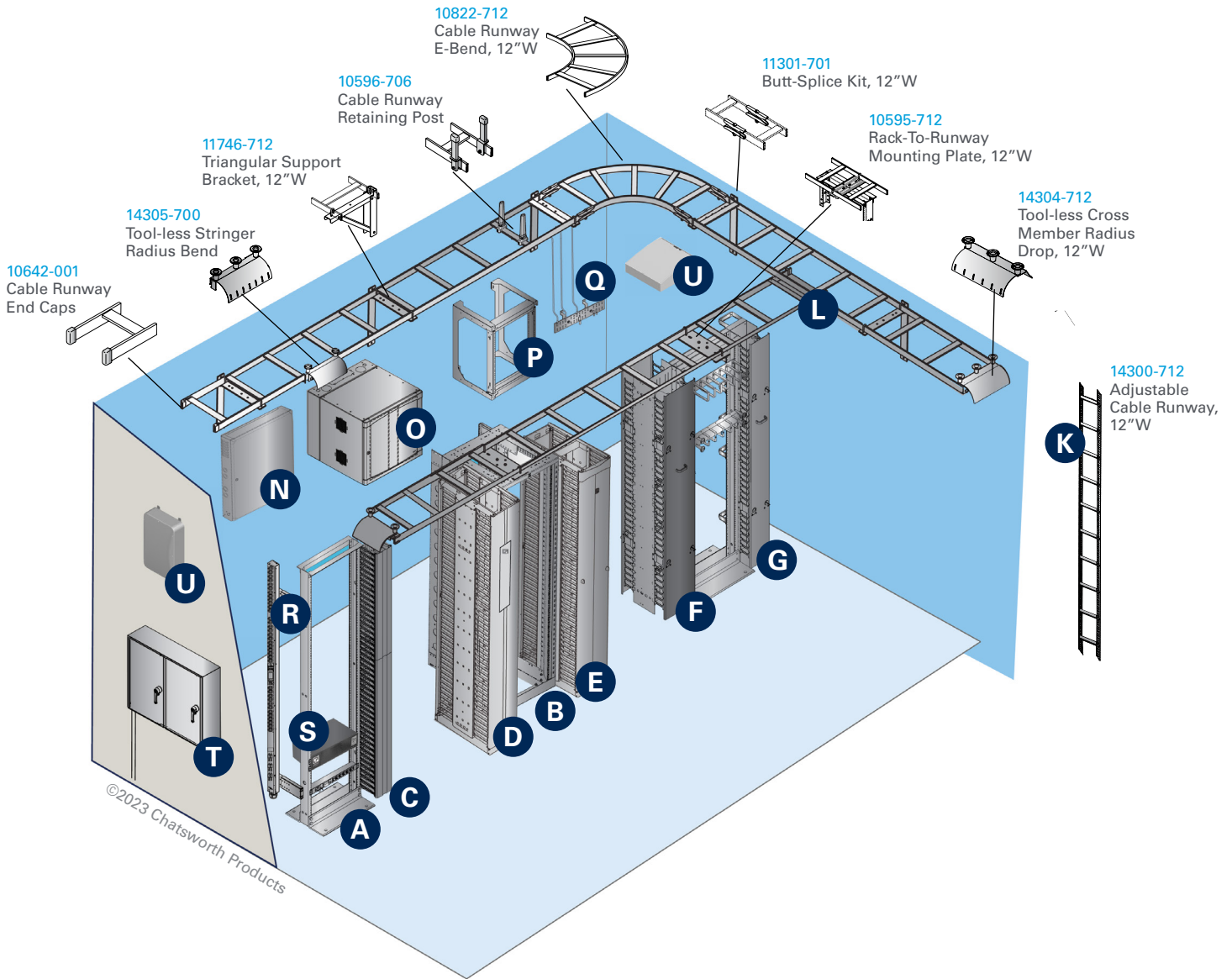
- A Rack Systems**
Two-Post Universal Rack
or Adjustable Rail QuadraRack®
- B Cable Pathway**
Adjustable Cable Runway
Tool-less Radius Drop
Pathway Dividers
- C Cable Management**
Motive® Vertical Cable Manager
(includes tool-less accessories)
 - Accessory Rod
 - Rotating Management Finger
 - Half Spool
 - Cable Bundle Swivel
- D Other Considerations**
Bonding Busbars
Power Management
Seismic Bracing
- E Wall-Mount Systems**
CUBE-iT® Wall-Mount Cabinet
 - Optimized for office environments

CPI Advantages

- High-density support with focus on fiber optic cabling and advanced Power over Ethernet (PoE)
- Integrated bonding features protect network and reduce installation time
- Superior cable and cord management optimizes signal quality and network speed
- Tool-less designs adapt to future changes and promote easy moves, adds and changes
- Highly adjustable cable management and runway simplify installation and maintenance
- Wall-Mount Cabinets protect and secure equipment in areas with limited space inside and outside the telecommunications room

Featured Solutions

CPI products feature high-quality construction and design, are easy to install, promote proper cable bend radii and meet ANSI/TIA/EIA standards, BICSI installation guidelines.



Rack Systems

- A**– Two-Post Standard Rack
- B**– Adjustable Rail Server Rack

Wall-Mount Cabinets/Racks

- N**– ThinLine II Wall-Mount Cabinet
- O**– CUBE-iT Wall-Mount Cabinet
- P**– Standard Swing Gate Wall Rack

Cable Management

- C**– Velocity® Cable Management
- D**– Motive® Cable Management
- E**– Evolution® Cable Management
- F**– MCS Master Cabling Section
- G**– CCS Combination Cabling Section

Power Solutions

- R**– eConnect® PDUs
- S**– Uninterruptible Power Supplies (UPS)

Bonding and Grounding

- Q**– Primary and Secondary Busbars

Cable Pathway

- K**– Adjustable Cable Runway
- L**– Universal Cable Runway

Other Options:

- T**– Industrial Enclosure
- U**– Wireless Enclosure

CPI Industrial Solutions

Maintain NEMA protection, cooling and security in harsh environments

CPI offers a full line of NEMA type enclosures and accessories so you can expand the network to the edge and protect valuable automation control equipment in harsh indoor or outdoor environments.



CPI Advantages

- Safely deploy equipment in manufacturing floors, warehouses, residential and commercial centers, 5G micro cells, industrial infrastructure, etc.
- UL Type options, including Type 4, 12, 1, 2, 3R and 5
- Keep dirt and liquid out with robotically applied foam gasket sealed RMR® Enclosures
- Secure edge and Internet of Things (IoT) equipment with IT equipment mounting option



On-Demand Configuration

Order a complete, kitted solution under one part number with the CPI Product Designer.



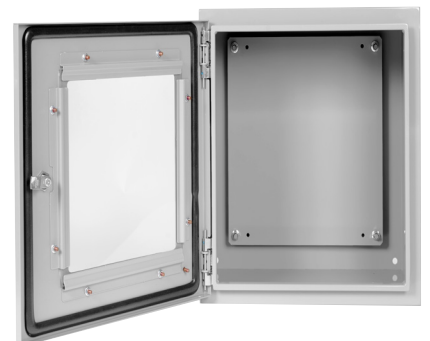
Filter Fans and Cooling Units

Variety of NEMA-rated options to protect the life of your equipment



Sealing Accessories

- Drain Plug
- Drip Shield
- Snap-In Liquid Tight Grommet
- Assorted Rextec Grommets



Mounting Panel Options

Electrical and automation control applications

Sample Applications

Technology is everywhere, and when you need to store and protect valuable ICT or electronic equipment that will need to reside in dirty, wet environments, rely on CPI's RMR® Industrial Enclosure solutions.



5G, Edge, IoT



Commercial and Residential Centers



Manufacturing Floors and Warehouses



Green Power, Industrial Infrastructures



**CHATSWORTH
PRODUCTS**

United States & Canada

Simi Valley, CA
800-834-4969
Toronto, Ontario, Canada
+905-850-7770
[chatsworth.com](https://www.chatsworth.com)

Latin America

Mexico City, Mexico
+52-55-5203-7525
Toll Free within Mexico
01-800-201-7592
[chatsworth.com.co](https://www.chatsworth.com.co)

Europe

Buckinghamshire, England, UK
+44-1628-524-834
[chatsworth.com](https://www.chatsworth.com)

Middle East & Africa

Dubai, UAE
+971-4-2602125
Doha, Qatar
+974-4-4267422
[chatsworth.com](https://www.chatsworth.com)

Asia Pacific

Jing'an District, Shanghai, China
+86 21 6880-0266
[chatsworth.com.cn](https://www.chatsworth.com.cn)

Find more information
about CPI solutions at:
[chatsworth.com](https://www.chatsworth.com)

+1-800-834-4969 (U.S. & Canada)
or techsupport@chatsworth.com

Manufacturing Capability and Global Availability

Headquartered in the United States, CPI operates from multiple sites worldwide, including offices in Mexico, Canada, China, the Middle East and the United Kingdom. CPI's manufacturing facilities are located in the United States, Asia and Europe.

Standard products are readily available through a global network of industry-leading distributors. With stock availability, and CPI's consistently competitive factory lead times, you can be assured that CPI solutions will be accessible to meet your project scheduling needs.

How to Buy

CPI sales are conducted in partnership with a global network of distributors, contractors and resellers to ensure a high level of stock availability. Use CPI's Online Catalog to place an order with a distributor near you. Go to [chatsworth.com](https://www.chatsworth.com) to learn more.

About CPI

CPI, a 100% employee-owned company, was founded in June 1991, when 90 workers joined together and purchased the Dracon Division of Harris Corporation using an Employee Stock Ownership Plan (ESOP). Employee ownership is central to the success of CPI. Employee owners are committed to a philosophy of quality through teamwork, caring and commitment, which are extended to customers through our solutions and services.



All products quoted are subject to availability based on manufacturing capacity and shipping dates should be considered estimates only. While every effort has been made to ensure the accuracy of all information, CPI does not accept liability for any errors or omissions and reserves the right to change information and descriptions of listed services and products.

©2023 Chatsworth Products, Inc. All rights reserved. Chatsworth Products, Clik-Nut, CPI, CPI Passive Cooling, CUBE-IT, Secure Array, eConnect, Evolution, GlobalFrame, MegaFrame, QuadraRack, RMR, Saf-T-Grip, SeismicFrame, SlimFrame, TeraFrame, Motive and Velocity are federally registered trademarks of Chatsworth Products. EuroFrame, H-Plane, Hi-Bar, In-Plane, M-Frame, NetPoint, Simply Efficient, Skybar, Wi-Tile and ZetaFrame are trademarks of Chatsworth Products and Oberon, a division of Chatsworth Products. All other trademarks belong to their respective companies.
Published 01/23 MKT-60020-342

[chatsworth.com](https://www.chatsworth.com)